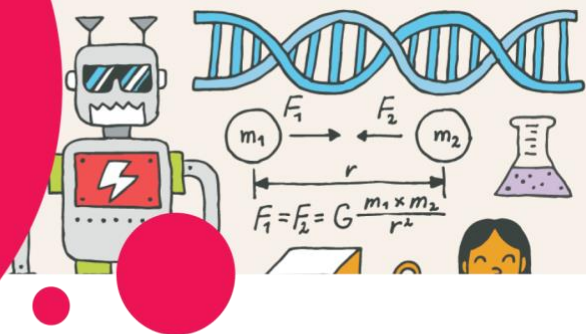


# WATER WORLD



## ANSWER KEY

### Water World (p. 3)

#### Exhibit – From Earth to Us – Hydroland Interactive

Find the Hydroland interactive.

1. How does creating the dam affect the local wildlife?

*The flooding of the animal habitats displaces the wildlife.*

2. How does creating the hydro facilities and transmission lines affect the industrialization of the surrounding city?

*They bring power to the city.*

3. Overall, what are the advantages and disadvantages of changing natural environments?

*Answers will vary.*

*For example: Changes may allow us to build structures that help us live more comfortably, but they may also destroy the ecosystem.*

## Power (p. 4)

### Exhibit – From Earth to Us – Canada’s Energy Mix

**Find** Canada’s Energy Mix interactive map. Select only HYDROELECTRIC PLANTS. In using water as a renewable resource, do you think Canada is doing its part? What examples prompted your answer?

*Answers will vary.*

## Power (p. 5)

### Exhibit – From Earth to Us – Turbine

**Find** the water turbine. Explain how we harness the power of water.

*The falling water spins the turbine, activating a generator to produce electricity.*

## Conservation (p. 6)

### Exhibit – Technology in Our Lives – Tiny House

**Find** the Tiny House. List two examples of how the Tiny House helps conserve water:

1. *Using a composting toilet*
2. *Reusing grey water*

## How We Use It (p. 7)

### Throughout the museum

**Find** exhibitions in the museum that demonstrate how people use water systems to our advantage. List examples below.

*Answers will vary.*

*For example: Irrigation, navigation, steam power*



## How We Abuse It (p. 8)

### Throughout the museum

**Find** exhibitions in the museum that demonstrate how humans are negatively affecting the global water system. List examples below.

*Answers will vary.*

*Polluting of lakes, streams, and ocean; melting glacier, using water for garbage, acidifying ocean*