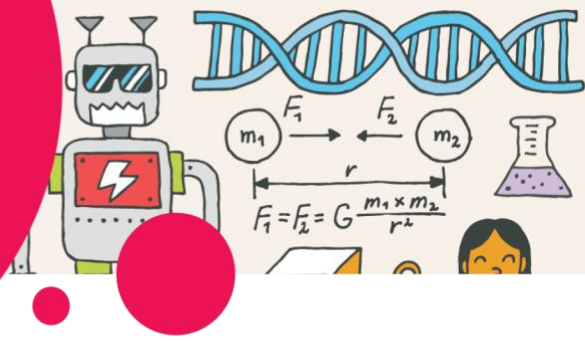


Stable Structures



MUSEUM MISSION

Grades: 1 to 3 / Primary Cycle 1 and 2

Your mission, should you choose to accept it, is to explore the museum and gain as much knowledge as possible!



Exhibitions

Artifact Alley

Stroll through interactive displays and over 700 artifacts.

A Into the Great Outdoors

See how people use technology to get outdoors and experience Canada.

B Steam: A World in Motion

Explore a time when steam made Canada—and the world—go round.

C Sound by Design

Hear and see what happens when sound meets design.

D From Earth to Us

Explore how we transform natural resources to make the everyday things in our lives.

Crazy Kitchen +

Challenge your perceptions and experience illusions that play with your senses.

E Medical Sensations

Explore the world of medicine through the five senses.

F Hidden Worlds

Engage with microscopes, telescopes, and digital interactives to explore worlds beyond our reach.

G ZOOM (ages 0-8)

A hands-on space where children can imagine, build, test, try...and try again!

H Wearable Tech

Discover a range of innovative technologies designed for the body.

I Technology in Our Lives

See the gadgets, tools, and appliances that shape our lives.

Exploretek

A tinkering space dedicated to learning by doing.

Bicycle Vortex

Exhibit – Into the Great Outdoors – Freedom on Two Wheels



Find the bikes in the vortex. Rank these bikes from least stable to most stable. Circle the number that represents the bike’s ranking.

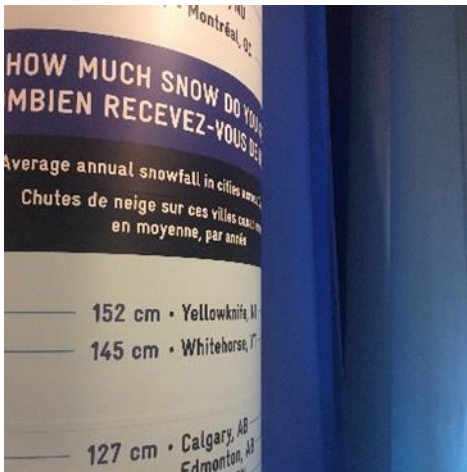
You can try the interactive to help you out finding the answer

	Least Stable			Most Stable
Safety bicycle	1	2	3	4
Ordinary	1	2	3	4
Tricycle	1	2	3	4
Hobby horse	1	2	3	4

Think: What makes your top-ranking bike the most stable one?

Snow Levels

Exhibit – Into the Great Outdoors – Snow fall Column



Find which city gets:

Most snow: _____

Least snow: _____

Think: How could the amount of snow in a region influence how structures in that region are built?

Mining

Exhibit – From Earth to Us – Prospector Tent



Find the tent. What shape is it?

- a) Triangle
- b) Dome
- c) Square
- d) Hexagonal

Think: This tent was made to meet certain conditions. What are they?

What do you think makes a tent this shape strong and stable?

Skeleton

Exhibit – Medical Sensations – Human Skeleton

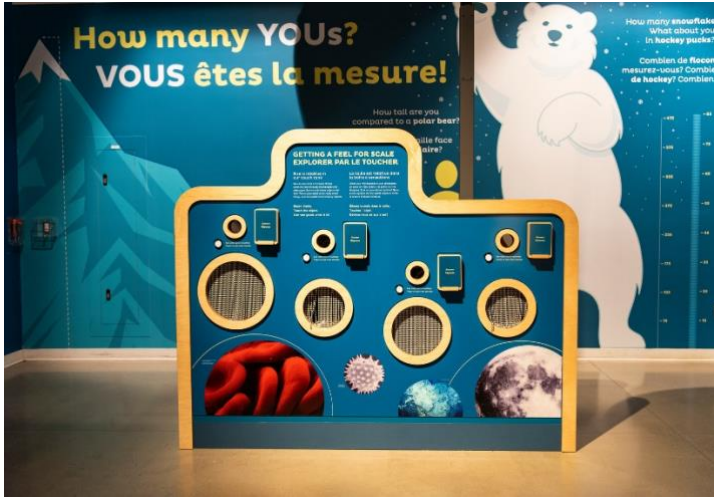


Find the human skeleton and look at its head.
What shape is the skull?

This shape allows the skull to absorb shock, making it strong. Can you think of any other fragile structures that have the same shape?

'YOU' Standing Tall

Exhibit – Hidden Worlds – How Many YOUs?



How many “YOU”s does it take to reach the height of the CN Tower?

How many hockey pucks would you need to build a tower the height of the shortest person in your group?

Would the tower be a stable structure?

With nothing but more hockey pucks on hand, how could you make it more stable? Sketch your answer below.

Strong Roofs

Look Outside!



Can you see the Ingenium Centre next door? What shape is the roof?

Think: The roof needs support to counter a major force. What is it?

In Canada, we must account for extra weight accumulating on roofs throughout out the year. Why do you think that is?

What is the most common shape for house roofs? Why?

Living Small

Exhibit – Technology in Our Lives – Tiny House



Which structure in the Tiny House acts as a bridge?

Hint! What connects the top floor to the main floor?

Think: The Tiny House is incomplete! What would you add to finish it?