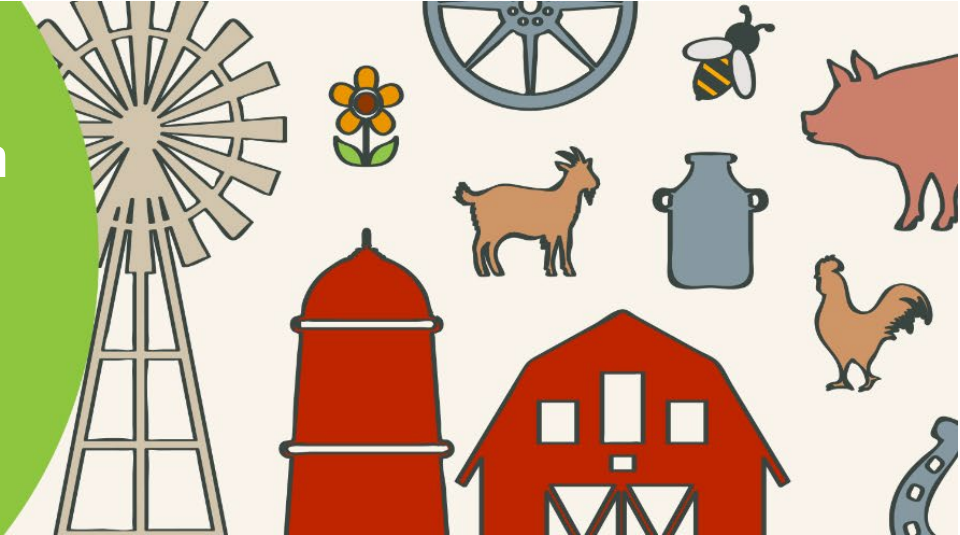


Pre-visit Information for the Canada Agriculture and Food Museum



We look forward to welcoming you at the Canada Agriculture and Food Museum! To make your visit as rewarding as possible, please read this sheet before your visit and share it with chaperones.

Preliminary visit

After confirming an upcoming reservation, group leaders are encouraged to take a preliminary visit to familiarize themselves with the museum. This is free of charge for group leaders, upon presentation of a confirmation letter.

Arrival procedures

We ask that all groups be dropped off in the parking lot of the museum, off Prince of Wales Drive (south of the traffic circle and north of Baseline). All groups board their buses at the same place. Your group will be greeted by a Museum Educator who will then review safety rules (**except self-guided visits**). During this time, the group leader should present the confirmation letter at the Admission Booth and provide payment.

Parking

The museum offers paid, on-site parking, with registration of your license plate. **Parking is free for buses but parking fees apply for other vehicles.** Find more information about [parking fees and payment methods](#).

Accessibility

The museum is committed to providing accessible programming. Please let us know if your group has any special needs, and we will be happy to discuss specific accommodations.

The museum is a working farm

We ask that visitors dress appropriately, and heed the safety guidelines outlined below. The Canada Agriculture and Food Museum is a working farm. Please keep in mind the potential hazards associated with large farm animals and working farm equipment. For your safety, please ensure all participants thoroughly wash or sanitize their hands after visiting each group of animals. **Please note that teachers and chaperones must remain with their group(s) at all times.**

Site plan

There are lots of things to see and do as you explore the museum. Find your way around the farm with using our [site plan](#).

Code of conduct

For the comfort and enjoyment of everyone, please keep the museum exhibitions and barns free from:

- smoking
 - eating, drinking, and gum chewing
 - conduct which is injurious or disrespectful to you, your fellow visitors, museum staff, and the farm animals
 - feeding or handling of the farm animals or equipment, unless this is part of the program
- ...and please remain with your group at all times.

Picnic lunches

From May through mid-October, the museum has a large outdoor area with tents and picnic tables to accommodate groups staying for lunch.

If you finish early

You are welcome to explore the Canada Agriculture and Food Museum's exhibitions and barns at your leisure until the arranged time of your departure or until 5 p.m., whichever comes first.

First aid

First aid is provided by museum staff. A chaperone must remain with his or her charge at all times in the First Aid Room.

Chaperones

Chaperones are responsible for their group and for the individuals in that group. Individuals not respecting our code of conduct will be removed from their group; a chaperone will be required to remain with them until the time of departure. The principal of the school will be informed.

Please note that we require the following minimum ratios:

Youth ages 14 and under	6 youths: 1 adult
Youth ages 15+	10 youths: 1 adult

Guided programs: Name tags

Please make name tags for your students which can be read easily by our educators. This will help them to quickly build a rapport with your class.

We look forward to meeting your group at the Canada Agriculture and Food Museum!

Questions?

If you have any further questions or need to make any changes to your reservation, please do not hesitate to contact us and we'll be happy to help.

Email: contact@IngeniumCanada.org

Telephone: 613-991-3053

Toll-free: 1-866-442-4416
