

52. PERPETUAL MOTION.

ENTERED AT STATIONERS' HALL.



59. A DOG GETTING DOWN STAIRS.

ENTERED AT STATIONERS' HALL.

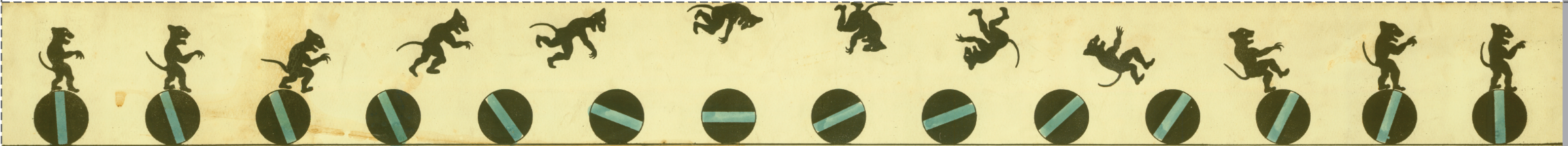


6. A JOLLY DOG.



67. FLY! LEAVE MY NOSE ALONE.

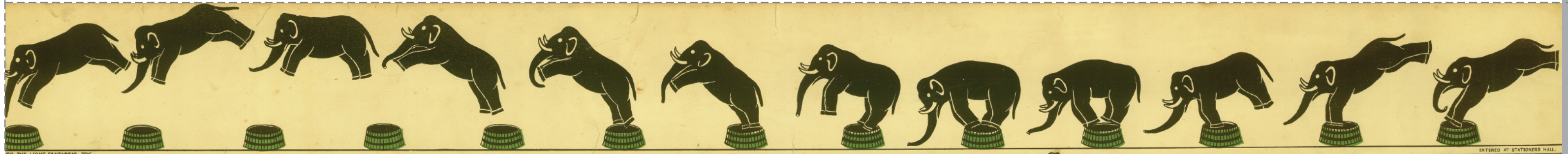
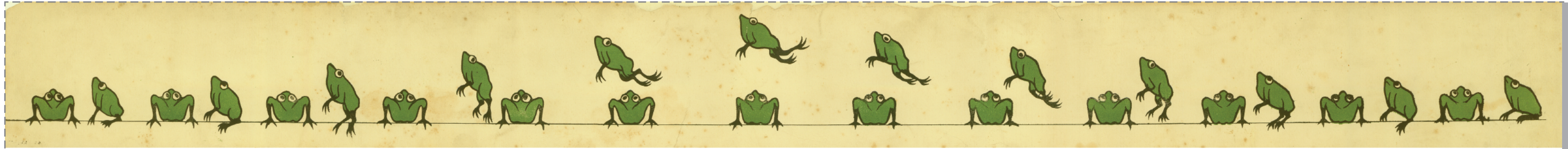
ENTERED AT STATIONERS' HALL.



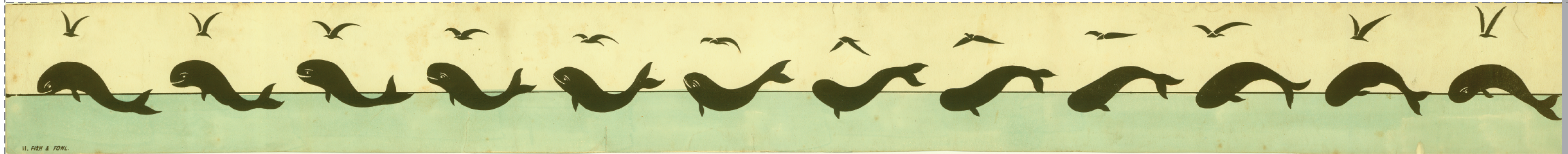
20. WARM WORK FOR BLACKEY.

ENTERED AT STATIONERS' HALL.

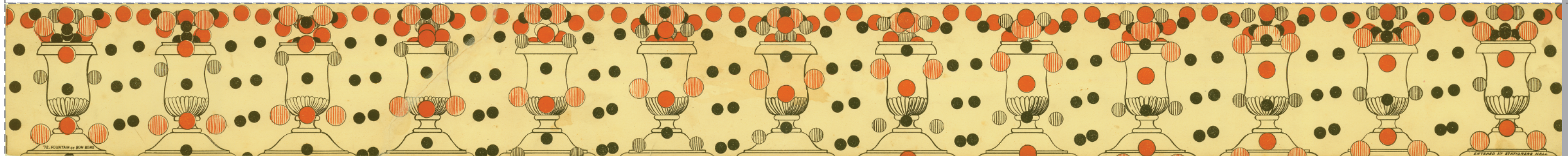




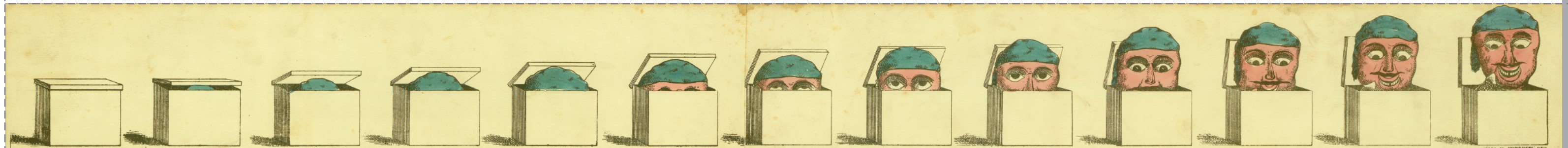
10. THE LIGHT FANTASTIC TOE ENTERED BY STATIONERS HALL



11. FISH & FOWL



12. MOUNTAIN OF BIN BINS ENTERED BY STATIONERS HALL



21. JACK IN A BOX ENTERED BY STATIONERS HALL